

Reburnent **PRO**

Charred Wood Craftsmen

ABOUT US

We are professionals in our field, masters of burnt wood with extensive experience in processing wood products for terrace, facades, fences, or any other interior/exterior detail. We can confidently guarantee a high-quality and pleasing result, as well as top-tier PREMIUM quality.



We meticulously process each piece of wood down to the smallest detail. To achieve the best results, we use modern technology and experienced specialists who have mastered the centuries-old Japanese burning technique called “SHOU SUGI BAN”.



TECHNOLOGY | 焼杉

"Shou Sugi Ban," also known as "Yakisugi," is a traditional wood preservation technique that involves charring the surface of the timber with fire.

► HOW DOES THE WOOD CHARRING PROCESS WORK?



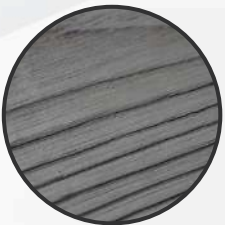
We use only the highest quality, fully dried Scandinavian spruce or European larch timber in our workshop.

The boards are charred at high temperatures using specialized equipment. It gives the wood a rich tone and brings out its natural texture.



After cooling, the charred layer is removed with special brushes, revealing a distinctive grain and enhancing the wood's character.

Using specialized machines with integrated compressed air technology, we thoroughly remove all surface impurities.



The final step is applying natural oils and finishing the wood in the shade of your choice.

**With proper maintenance, our charred wood products can last for up to 80 years.*

ADVANTAGES

LONGEVITY



Burnt wood becomes resistant to moisture, UV rays, mold, and fungus, therefore it lasts longer

EASY MAINTENANCE



Charred wood siding doesn't require regular painting or varnishing, so it doesn't need much maintenance

PEST PROTECTION



The burning process destroys harmful organisms in the wood, making it unappealing to parasites

AESTHETICS



The appearance of burnt wood changes; it darkens, its grain becomes more pronounced, and it looks luxurious

FIRE RESISTANCE



Charred wood is less flammable, making it a significantly safer alternative to regular siding

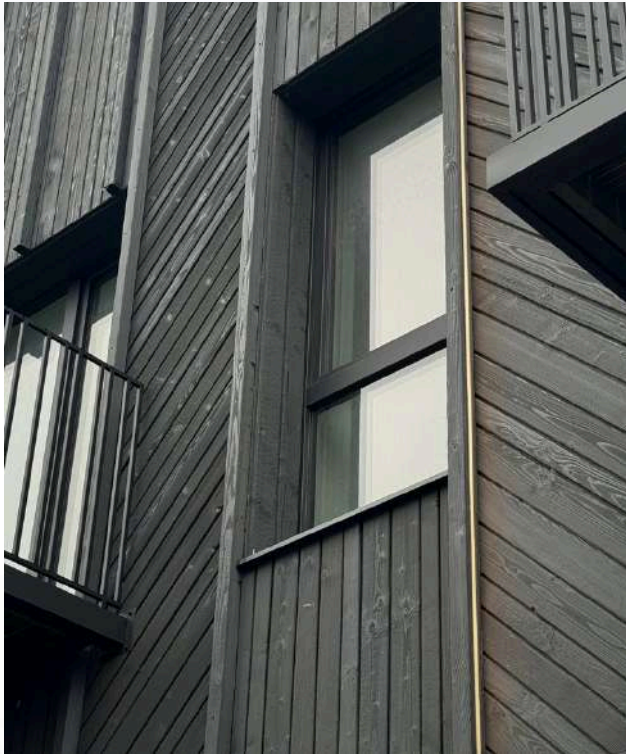
HARMLESS



Charred wood is only coated with an eco-friendly and natural oil that is not harmful to your health

WAYS TO USE IT

► FOR FACADES

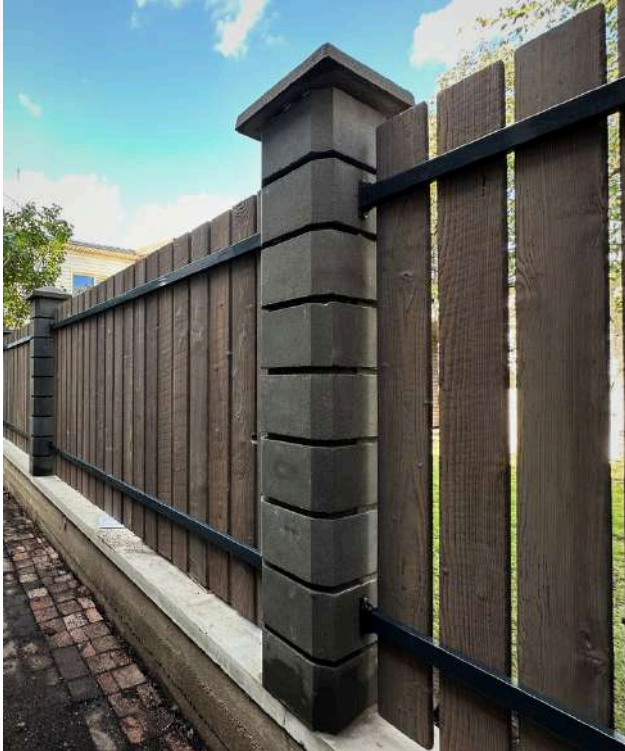


► FOR TERRACES



WAYS TO USE IT

► FOR FENCES



► FOR INTERIOR



SHADES

Here are some of the most popular colors for spruce wood. You can find a wider selection of shades on our website.



ALIGATOR®



ANTHRACITE GREY®



CLAY GREY®



DARK GREEN®



EBONY®



GRAPHITE GREY®



GRAPHITE GREY+®



HEMLOCK®



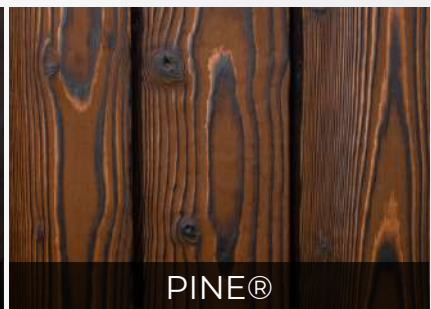
MAHAGANY®



NEBELGROU®



PALISANDER®



PINE®



PLATINUM GREY®



RUSTIK OAK®



WHITE®

**Please note that the product color may differ from the actual item due to your monitor settings or other factors.*

WALL SLATS

Discover our wall paneling for your living room or other home space.



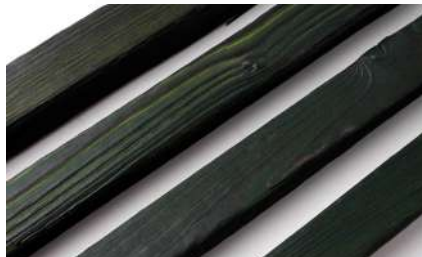
ANTHRACITE GREY®



CHESTNUT®



CLAY GREY®



DARK GREEN®



EBONY®



GRAPHITE GREY®



GRAPHITE GREY+®



MAHAGANY®



NUT WOOD®



PALISANDER®



PINE®



PLATINUM GREY®



PLATINUM GREY+



RUSTIK OAK®



TOSKANA GREY®

**The product color may vary from the actual item color due to your monitor settings or other factors.*

MOUNTING

Siding can be attached horizontally, vertically, or diagonally. It's recommended to **leave gaps of 500–600 mm** between screws. Only use stainless steel screws for installation.



For a standard 20 mm thick siding, it is recommended to use screws that are 42 mm in length. Also, ensure that the screws are properly driven in.

To ensure better longevity of the wood outdoors, when installing siding, we recommend oil the end cuts, cracks, drilled holes, or notches.



MAINTENANCE

After a few years post-installation, the color will start to change slightly. At this point, you must decide whether to appreciate the natural aging of the wood or to refresh and re-oil it to ensure the color remains vibrant and unchanged over time.



If you decide to refresh, the wood is coated with one layer of oil. To avoid the oil drying too quickly and insufficient penetration into the wood, avoid oiling on a sunny or hot day.

"Shou Sugi Ban" wood doesn't require regular maintenance, but if you want to keep the wood looking the same as when purchased, we recommend reapplying a layer of oil every 5-8 years.

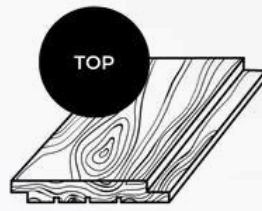


When cleaning the siding of a facade, terrace, gazebo, or fence, it's best to employ a gentle approach. We recommend using clean water combined with a brush that has soft bristles.

DIMENSIONS

CLADDING BOARDS

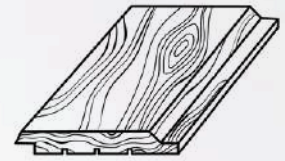
HALF-LAP JOINT



PRO1



PRO2



PRO3

SCANDINAVIAN SPRUCE

Thickness (mm)	Width (mm)	Effective width (mm)	Length (mm)	Gap between boards (mm)
20	95	80	3000, 3300, 3600, 3900, 4200, 4500, 4800, 5100, 5400	0, 5, 10
20	120	105		
20	145	130		
20	195	180		

EUROPEAN LARCH

20	95	80	3000, 4000, 5000, 6000	0, 5, 10
20	120	105		
20	145	130		

SCANDINAVIAN SPRUCE (mm)

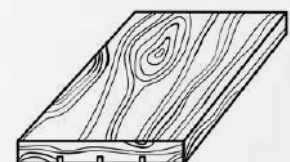
Thickness	Width	Length
20	50	3000, 3300, 3600, 3900, 4200, 4500, 4800, 5100, 5400
20	70	
20	95	
20	120	
20	145	
20	195	

EUROPEAN LARCH

20	70	3000, 4000, 5000, 6000
20	95	
20	120	
20	145	

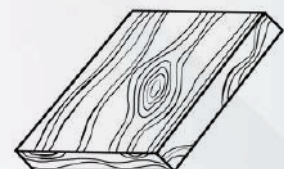
CLADDING BOARDS

RECTANGLE



PRO4

RHOMBUS

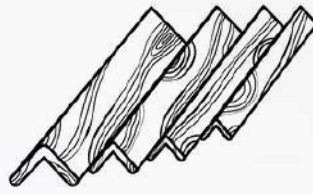


PRO6

Post-charring tolerance may be up to 3–4 mm. For custom sizes, please contact us to discuss the options.

DIMENSIONS

EXTERNAL 90° CORNERS



KMP1



SCANDINAVIAN SPRUCE

Thickness (mm)	Width (mm)	Effective width (mm)	Length (mm)
12	35x35	23x23	3000
12	50x50	38x38	
12	70x70	58x58	
14	95x95	81x81	

EUROPEAN LARCH

12	35X35	23X23	3000
12	50X50	38X38	
12	70X70	58X58	

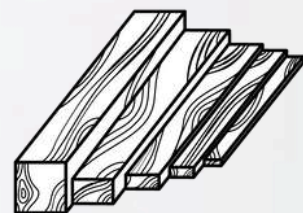
SCANDINAVIAN SPRUCE (mm)

Thickness	Width	Length
20	45	3000, 3300, 3600, 3900, 4200, 4500, 4800, 5100, 5400
45	45	
60	60	
45	95	
95	95	

EUROPEAN LARCH

45	45	3000, 4000, 5000, 6000
45	95	
95	95	

SLATS

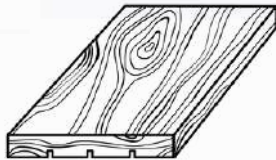


BRU1

The table shows only the most popular dimensions, but we offer a wide range of custom sizes as well — for example: 200x200, 30x40, 28x60, and more.

DIMENSIONS

DECKING BOARDS



PRO4

SCANDINAVIAN SPRUCE (mm)

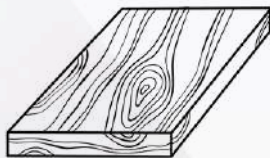
Thickness	Width	Length
28, 32	95	3000, 3300, 3600, 3900, 4200, 4500, 4800, 5100, 5400
28, 32	120	
28, 32	145	

EUROPEAN LARCH

Thickness	Width	Length
28	95	3000, 4000, 5000, 6000
28	120	
28	145	

FENCE BOARDS

RECTANGLE



PRO5

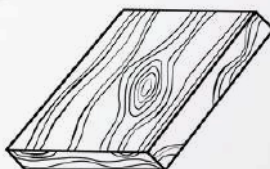
SCANDINAVIAN SPRUCE (mm)

Thickness	Width	Length
19, 25	70	3000, 3300, 3600, 3900, 4200, 4500, 4800, 5100, 5400
19, 25	95	
19, 25	120	
19, 25	145	

EUROPEAN LARCH

Thickness	Width	Length
19, 25	70	3000, 4000, 5000, 6000
19, 25	95	
19, 25	120	
19, 25	145	

RHOMBUS



PRO6

If you require custom dimensions, feel free to contact us to discuss the options.

PRICING

PRICES ARE LISTED EXCLUDING VAT

DECKING BOARDS	WIDTH, MM	PRICE (PER 1 SQ. M)
Spruce	28	24,70 Eur
Spruce	32	27,50 Eur
Larch	28	37,00 Eur

FENCE BOARDS	WIDTH, MM	PRICE (PER 1 SQ. M)
Spruce	19	23,70 Eur
Spruce	25	26,00 Eur
Larch	19	36,50 Eur
Larch	25	38,00 Eur

CLADDING BOARDS	WIDTH, MM	PRICE (PER 1 SQ. M)
Spruce	20	21,00 Eur
Larch	20	34,00 Eur

SLATS	PRICE (PER 1 LINEAR METER)
Spruce	2,50-9,40 Eur*
Larch	6,00-15,00 Eur*
*Price depends on the dimensions	

OTHER SERVICES	PRICE (PER 1 SQ. M)
Client wood processing	5-9 Eur
Industrial wood painting	4-10 eur

WE APPLY THE HIGHEST QUALITY STANDARDS!

We offer free delivery of samples to parcel lockers within Lithuania. For Deliveries to other countries, a small additional fee applies. Interested? Contact us today.

CONTACT US

Reburnent PRO CHARRED WOOD CRAFTSMEN

Email: **info@reburnentpro.com**

Phone: **+370 685 58485**

Phone: **+370 670 07821**



FACEBOOK



INSTAGRAM



LINKEDIN